



## Complex Lesion Treated with the COMBO Stent Shows Excellent Results at 6 Month Angiographic Follow Up

Professor Robbert de Winter is Interventional Cardiologist at the Heart Center of the Academic Medical Center, Amsterdam, The Netherlands.

**Prof. Dr. R.J. De Winter**  
Interventional Cardiologist

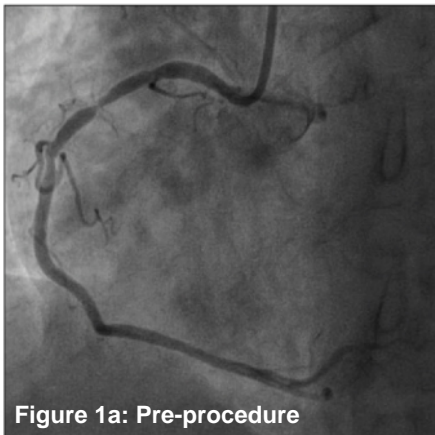


Figure 1a: Pre-procedure

The patient is a 79 year old male with unstable angina and high risk factors including diabetes, family history of atherosclerotic disease and smoking habit. At the referring hospital, angiography was conducted which revealed a severely calcified subtotal stenosis at the proximal RCA and a second lesion at the proximal LAD. The RCA lesion was determined to be the culprit (*Figure 1a*) and was treated at our center.

The heavily calcified lesion was pre-dilated with a 2.5 mm balloon at 10 atm. After pre-dilatation, a 3.5 x 13 mm **COMBO Dual Therapy Stent** was successfully implanted. The remarkable trackability and deliverability of the **COMBO Stent** allowed an accurate and uncomplicated placement of the stent with excellent result (*Figure 1b*).

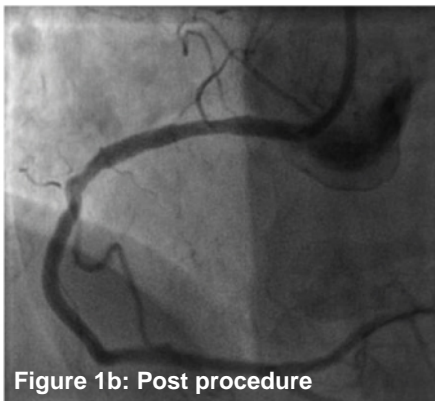


Figure 1b: Post procedure

Six months later, the patient was re-admitted with stable angina and angiography confirmed progressive disease in the LAD. Meanwhile, the **COMBO Stent** previously implanted in the RCA remained patent (*Figure 1c*). With calibration using FFR showed a fractional flow reserve of 0.64 in the LAD (*Figure 2a*), coronary intervention was performed and the LAD lesion was stented with a 2.5 x 18 mm **COMBO Dual Therapy Stent** at 14 atm (*Figure 2b*).

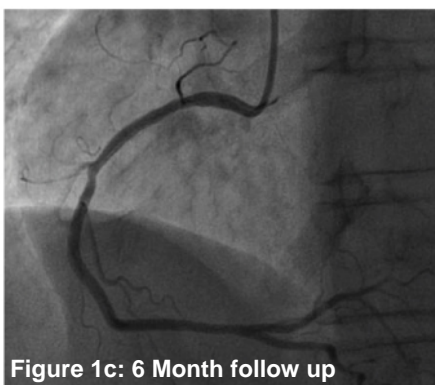


Figure 1c: 6 Month follow up

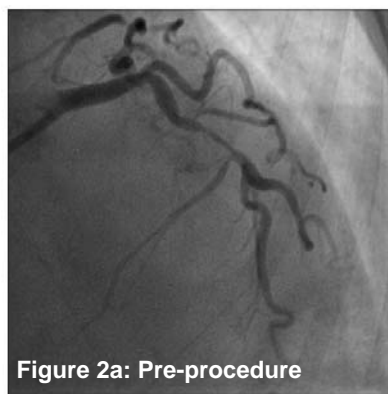


Figure 2a: Pre-procedure

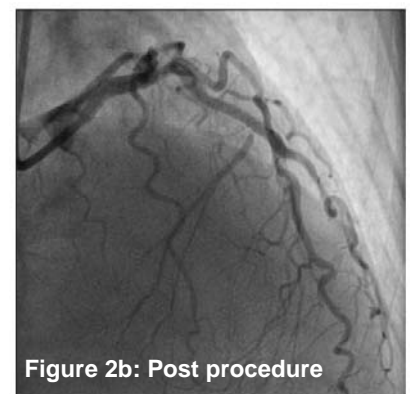


Figure 2b: Post procedure